

# SUPPLY ONE

## UNLEASHES THE POWER OF PACKAGING



Whether you're packaging meat, poultry or fish; fresh, frozen, processed or ready-to-eat, SupplyOne delivers complete solutions that *turn packaging into profit.*

SupplyOne is America's single point of contact for primary packaging, custom thermoformed products, packaging supplies, packaging automation, and services proven to simplify packaging ownership to save time, money and cash flow.

### Our Packaging Specialists

- Identify the right barrier, shelf-life, graphics film specification and sealing properties for your application
- Design and prototype packaging that captures your customers' attention
- Assess and recommend enhancements to your packaging process to optimize throughput
- Recommend, install and service a broad range of best in class primary packaging equipment, secondary and end-of line equipment
- Ensure your inventories are right-sized with customer stocking programs and delivery services to help keep your total cost at or below market

**BETTER  
PACKAGING**

**FASTER  
SPEED TO  
MARKET**

**ENHANCED  
EFFICIENCIES**

**REDUCED  
WORKING  
CAPITAL**

**INCREASED  
CASH FLOW**

# AMERICA'S FOOD PACKAGING COMPANY HAS YOU COVERED



## Thermoforming Films

Fresh, frozen, pasteurized, smoked, ready meals, case ready – we have solutions for anything you want to package on your rollstock lines.

Stock & custom • Flexible & semi rigid • Low to high barrier • Cook-in options (microwaveable, ovenable, sous vide) • 2.4 – 11mil flexible; 8-45mil semi rigid • Easy peel, peel/reseal & lock seal • up to 10 color flexographic & roto gravure printing • Co-extrusions & laminations • Recyclable films with PCR content



## Lidding Films

Whatever your top film need, SupplyOne has got you covered with films compatible with rigid trays, planks, form fill and seal, and every sealing method.

Microwaveable/dual ovenable • Shrink & standard lidding • Anti-fog • Plain & printed • Flexographic or rotogravure printing • Peelable, resealable & lock seals • Coextrusions & laminations • Breathable to high barrier



## Vacuum Skin Packaging (VSP)

When looking for an alternative to traditional case ready packaging, look no further than VSP. Outstanding optics and skin-tight fit promote product quality and freshness. The streamlined packaging is a space saver, allowing for multiple display options, while minimizing purge. The result is maximum impact in the case and extended shelf life.

**SupplyOne manufactures custom trays in our SQF certified facility**, and also offers semi-rigid rollstock for inline forming.



## Shrink Bags

Shrink bags are the perfect option for fresh and frozen proteins with variable sizes and profiles. Industry leading shrink performance with high gloss and superior clarity make your packaged meats and cheeses captivating. Engineered to provide a secure fit and conform to the shape of your product, shrink bags prolong shelf life, eliminate purge and prevent the loss of aroma and weight.

Bone guard • High abuse • **Saran free** • Plain & printed with exceptional graphics • Loose or taped • High, medium & low barrier • Pigmented bags • Poultry bags



## Custom Stand Up Pouches & Stock Vacuum Pouches

Pouches are the new go to for many retailers who want their products to garner attention on the shelf, while maximizing shelf space.

Pre-zipped pouches • Stock vacuum pouches • Clear front/printed back pouches • Plain & printed • Coextrusions • Standard & high barrier • 3, 4, 5 mil stock in clear & colors • Master bags • Metallized & foil laminations



## Vertical/Form/Fill/Seal

Whatever your application calls for - bagging frozen meats to liquid hot fill - we have the appropriate specification to ensure high output speeds, reduced leakers, improved appearance and functionality, and cost savings.

Plain & printed • Flexographic or rotogravure printing • Breathable to high barrier • Coextrusions & laminations • Recyclable films with PCR content • Peelable, resealable & lock seals • Microwaveable



## Retort or HPP

Designed to withstand the rigors of thermal processing and high-pressure pasteurization, we can help customize your packaging to increase shelf life and convenience for your customer.

Stock & custom options • Variety of material options available • Spouts • Zippers • Straight tear & easy-open • Flexographic or rotogravure printing



## Chub

With its limited use of packaging materials, efficient use of shelf space, and the opportunity to print portion sizes on the outside of the package, chub packaging is gaining in popularity for fresh and cooked ground meats, pet foods and alternative proteins.



## Trays & Containers

SupplyOne manufactures and distributes a variety of containers, spanning retail-ready compartmentalized trays, CPET dual ovenable, microwaveable trays for ready-to-eat meals, deli items, and more.

Custom & stock thermoforming • Barrier (MAP) & non-barrier • Microwaveable & dual ovenable • Foam • Foil • Recyclable films with PCR content • Cups, tubs, pails • Clamshells (hinged & 2 piece) • Partitioned trays & lids



## And More...

Cold chain packaging • Netting • Bone guard • Coated papers & interleavers • Labels • Printed tape • Soaker pads • Jan-San supplies • Safety supplies • *and more...*



## DEEP FOOD INDUSTRY EXPERTISE

- Independent & unbiased vendor/material selection
- Global sourcing & supply chain management
- Co-packing material management programs
- Custom film designs—extrusions, laminations, graphics
- Optimization of equipment & materials
- Line layout & design



# Better Packaging, Increased Efficiencies, Reduced Costs & Improved Cash Flow

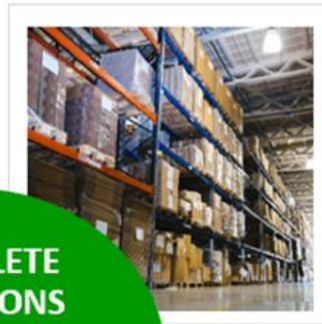
Find out for yourself why  
We're America's food packaging company.

## PRIMARY PACKAGING

Thermoforming films, shrink bags, vacuum pouches, custom designed extrusion; trays & containers  
Up to 12 color flexographic & 8 color rotogravure films, bags & pouches;  
Cook-in products; retort films/ pouches & various specialty packaging products

## CUSTOM MANUFACTURING

- Custom corrugated products
- High-end graphics
- Point of purchase displays
- Plastic thermoforming
- Protective interior packaging
- Custom printed labels

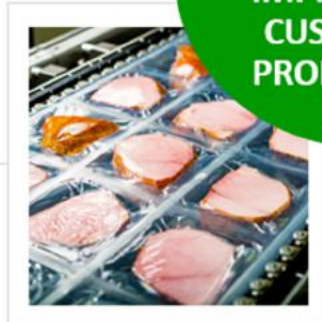


## DISTRIBUTION PRODUCTS

- Packaging products
- Consumable supplies
- Secondary packaging
- Industrial packaging
- Shipping supplies
- Protective interior packaging
- Jan-San & Safety products

## PACKAGING AUTOMATION

- Primary packaging equipment
- End-of-line equipment
- Robotics
- Flexible lease program
- Rental program
- Factory-trained technicians
- Preventative maintenance
- Equipment service
- Tool repair program



COMPLETE  
SOLUTIONS  
BUILT TO  
IMPROVE OUR  
CUSTOMERS'  
PROFITABILITY

## PROGRAMS & SERVICES

- Project management
- Logistics services
- On-site services
- Inventory management
- Engineering services
- Summary billing
- Products specification
- Packaging use assessments
- Ecommerce solutions
- Contract packaging

## EXPERTISE

Packaging Engineers & Designers  
Food Packaging Specialists  
Packaging Automation Specialists & factory trained Equipment Technicians

Are you ready to unleash the power of packaging?